



## A PLATFORM FOR CULTURAL & HERITAGE ENTREPRENEURS

---

**The Bendahari Markets! is a shared space.**

Besides being home to Donald & Lily, The Bendahari Markets! is also a place intended for small business owners, young entrepreneurs or home-makers to showcase their products.

---



**MARKETS!**  
PASAIR · 市场

**Open Thursdays-Saturdays**  
**10am-5pm**

Located at 147 Jalan Bendahara,  
75100 Melaka, Malaysia



# RENTAL RATE: B. WEEKEND WORKSHOPS



## MARKETS!

CULTURAL RETAIL

### I Love You Soy Much - Workshop



The ingredients of a good relationship include passion, care, tenderness and patience! Join us for a class to appreciate the art of traditional soy sauce making, paired with our rich rice heritage. The art of slowing down, together.

**Lot 147 Markets!**  
15th February 5-6pm  
RM150 for two pax

**To make a Booking:**  
+6012-362 8274

## Weekend Rental Rates

### Pop-up with us during the weekends

20% commission of workshop tickets sold

Additional RM20 per plugpoint or RM40 for oven usage.



# MONTHLY RENTAL RATE: C. RETAIL SPACE



1. Feature Wall Space

2. Glass Cabinet

## 1. Feature Wall Space

**A prime location, to feature your products.**

RM350 / month

---

## 2. Glass Cabinet

**Perfect for jewellery companies, or other treasures.**

RM200/ month

\*The space is leased on up to a 3-month basis.

\*Vendors are required to track their own stock updates for replenishment.

\*Suitable products & brands that fit the theme will be selected.



# MONTHLY RENTAL RATE: C. RETAIL SPACE



3. Cupboard Space



4. Bookshelf Space

## 3. Retail Cupboard

**Ideal for Home-Ware Decoration.**

RM200 / month

---

## 4. Bookshelf

**Ideal for a small publishing house selling books related to heritage & culture.**

RM200 / month for a full cabinet

\*The space is leased on up to a 3-month basis.

\*Vendors are required to track their own stock updates for replenishment.

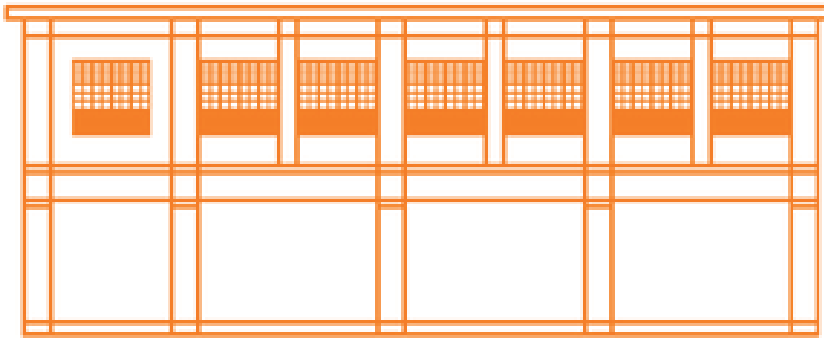
\*Suitable products & brands that fit the theme will be selected.





**MARKETS!**  
PASAIR · 市场

# BE PART OF OUR COMMUNITY



**PLEASE CONTACT:**

**Melissa Chan**

**Tel: +6011-2609 3921**

**E-mail: [melissa@thebendahari.com](mailto:melissa@thebendahari.com)**

---

**To find out more about our other projects:**

**[www.thebendahari.com](http://www.thebendahari.com)**

**[facebook.com/thebendahari](https://facebook.com/thebendahari)**

**[@thebendahari.markets](#)**

**[@thebendahari](#)**



**MARKETS!**  
PASAIR · 市场



### **FIND YOUR WAY TO US:**

<https://maps.app.goo.gl/jHRooGtmvBdLB69H8>

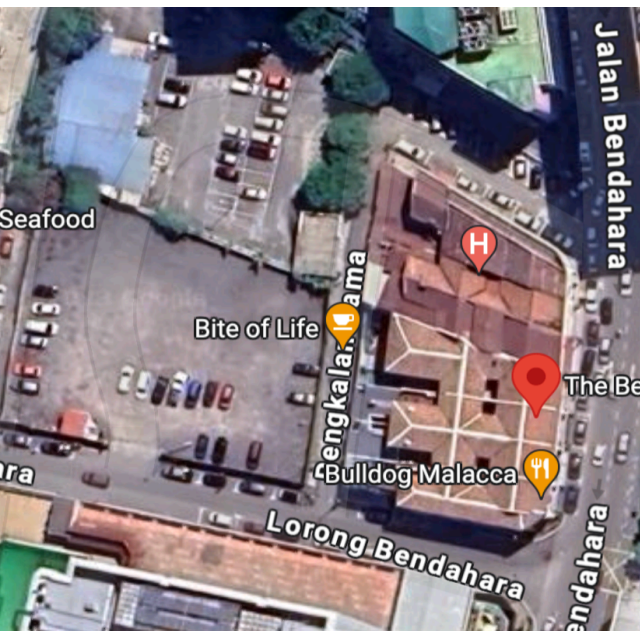
**Waze to: The Bendahari**

### **Paid-Parking: Whole Day RM5**

Located behind our building, directly opposite the former Ramada Hotel.

### **Look for The Bendahari Markets!**

where Donald & Lily a home-grown Melakan food brand, operates from.



**Also, find us online:**

[www.thebendahari.com](http://www.thebendahari.com)

[facebook.com/thebendahari](https://facebook.com/thebendahari)

[@thebendahari](https://instagram.com/thebendahari)

